



SCIENTIFIC KNOWLEDGE REQUIRED FOR PREPARING CONTINGENCY PLANS FOR XYLELLA FASTIDIOSA

Sybren Vos
Team Leader Plant Health Monitoring

OUTLINE



EFSA & Plant health monitoring

Actors of the contingency plan

Science in the contingency planning

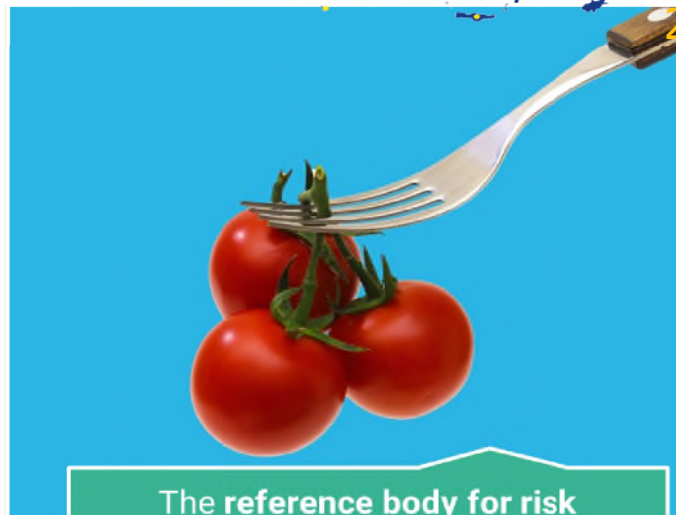
Interaction between Scientific fields

Conclusion

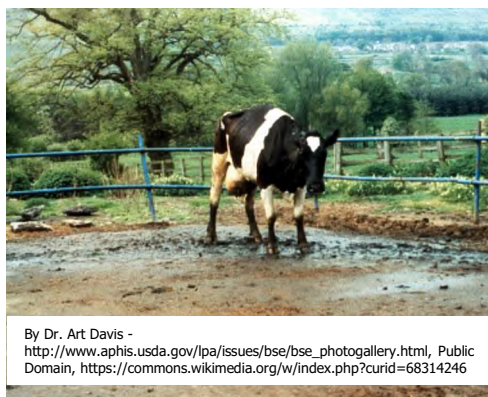




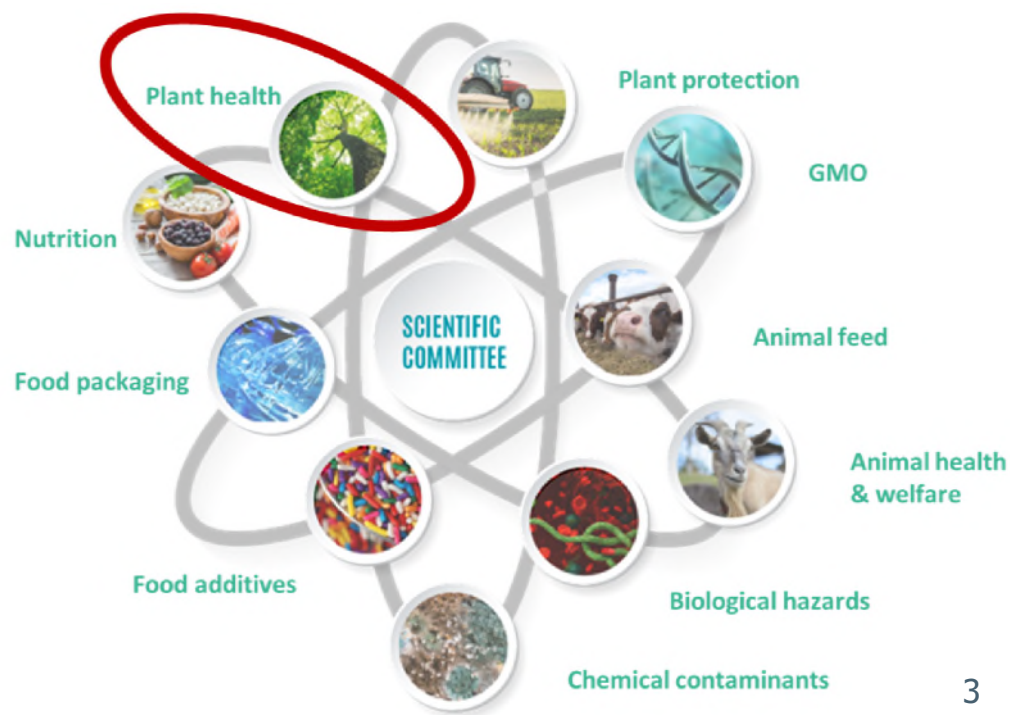
EFSA
established
under EU law in
2002



The **reference body for risk assessment** of food and feed in the European Union. Its work covers the entire food chain – from field to fork



shutterstock.com · 2137679763



PLANT HEALTH MONITORING

Support to PREPARATION

Early warning

Horizon
scanning

Entry

Establishment

Spread

Impact

Risk assessment
and
Pest prioritisation

Pest ranking

PLANT HEALTH
LAW

Support to IMPLEMENTATION

Early
detection

Pest survey toolkit



CONTINGENCY PLANNING AND PM 9/10 (1)

- **Purpose:** Ensure rapid and effective response to pest outbreaks
- **Scope:** Applicable to generic and pest-specific plans
- **Objective:** Minimize economic and environmental impacts



Generated with AI · April 17, 2025 at 4:15 PM

ACTORS OF THE CONTINGENCY PLANNING

Risk managers

- Strategic planning and response
- Risk mitigation
- Resource allocation



ACTORS OF THE CONTINGENCY PLANNING

Scientists

- Pest epidemiology
- Pest risk assessment
- Pest diagnostics and control
- Pest surveillance

Economists

- Economic impact assessment
- Control Measures
- Trade impact

Lawyers

- Legal Compliance
- Drafting Legal Documents

Regulatory
science



Risk managers

- Strategic planning and response
- Risk mitigation
- Resource allocation
- Collaborative efforts



ACTORS OF THE CONTINGENCY PLANNING

Scientists

- Pest epidemiology
- Pest risk assessment
- Pest diagnostics and control
- Pest surveillance

Economists

- Economic impact assessment
- Control Measures
- Trade impact

Lawyers

- Legal Compliance
- Drafting Legal Documents

Regulatory
science

Risk managers

- Strategic planning and response
- Risk mitigation
- Resource allocation
- Collaborative efforts
- Communication

Communication

Stakeholders

Farmers

Citizens

Trade partners

Other

CONTINGENCY PLANNING AND SCIENTIFIC EXPERTISE

Problem analysis

1. Background Information on the Pest
2. Initiation of a Contingency Plan
3. Presumptive Diagnosis

Action

4. Eradication Actions
5. Prolonged Official Action
6. Completion of Official Action

Decision making

7. Command Structure

Communication

8. Stakeholder Consultation
9. Internal Communication
10. External Communication

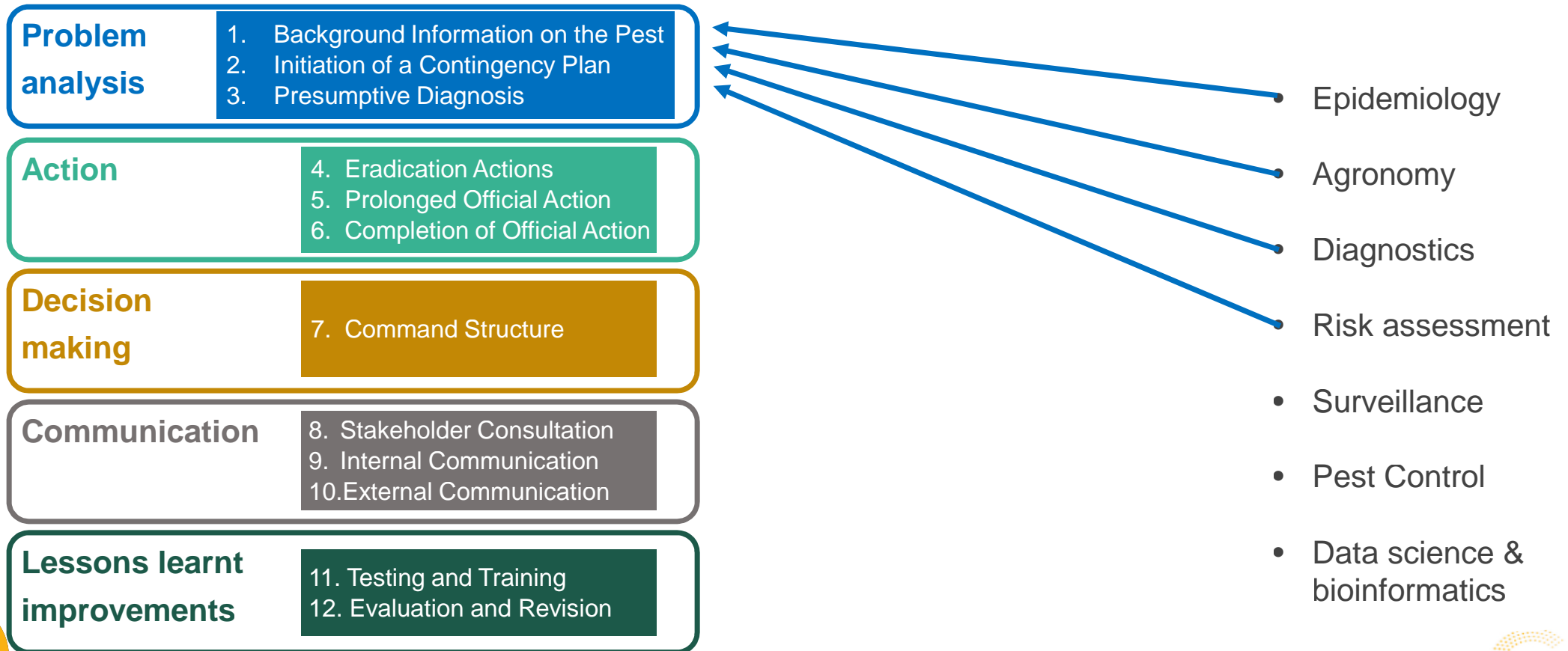
Lessons learnt improvements

11. Testing and Training
12. Evaluation and Revision

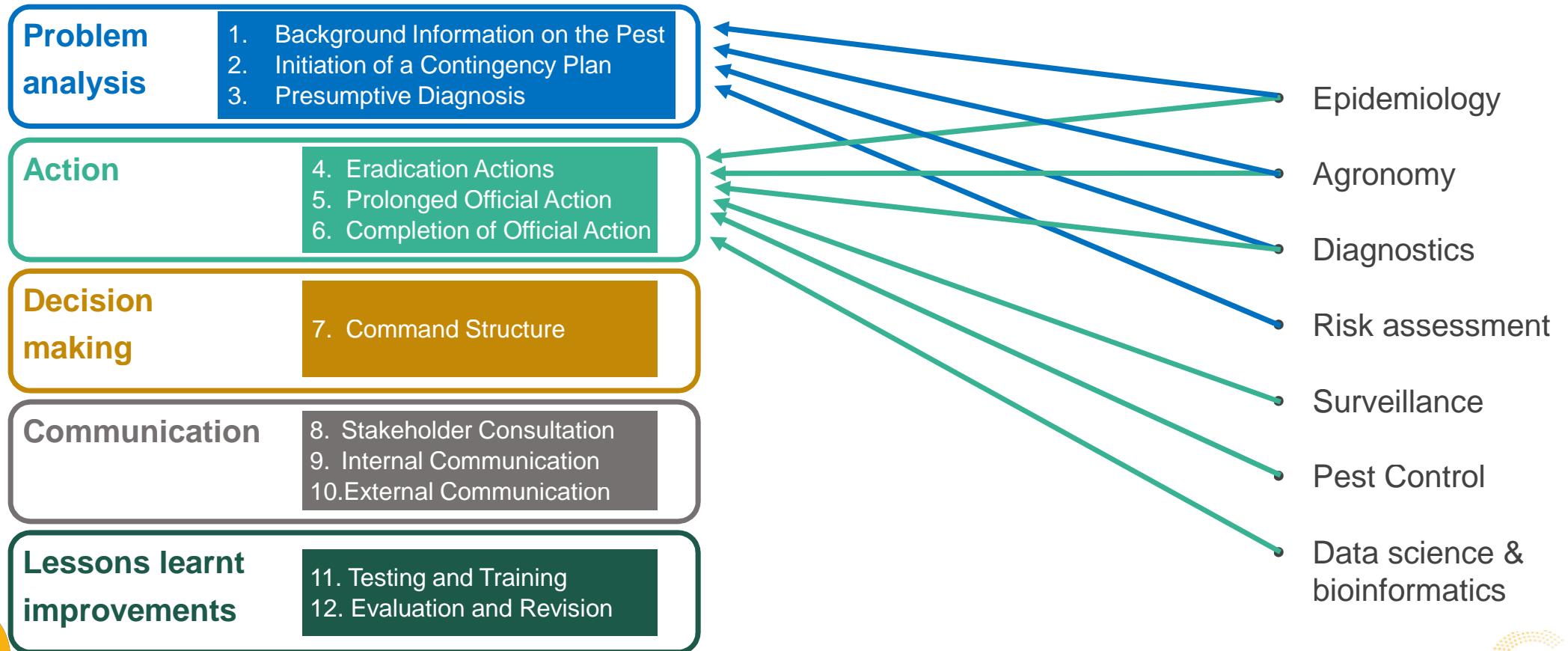
- Epidemiology
- Agronomy
- Diagnostics
- Risk assessment
- Surveillance
- Pest Control
- Data science & bioinformatics



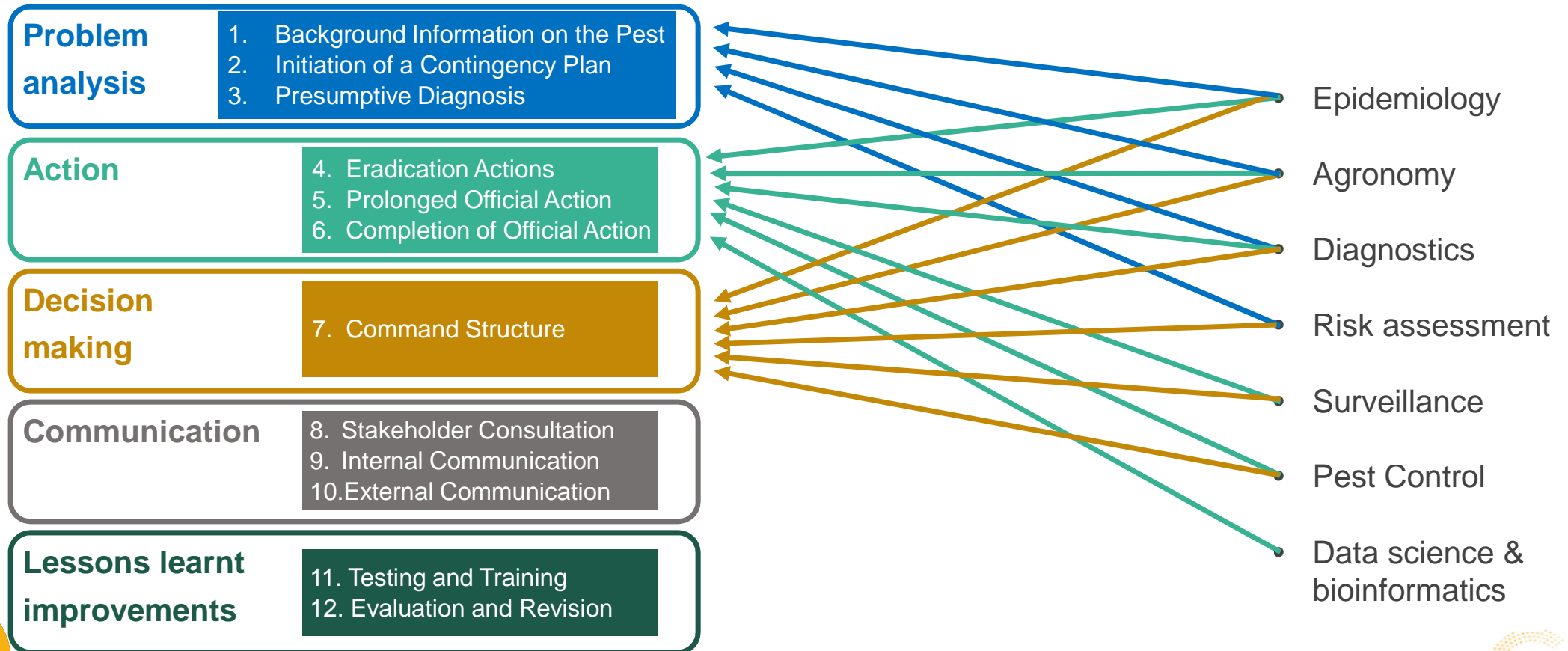
CONTINGENCY PLANNING AND SCIENTIFIC EXPERTISE



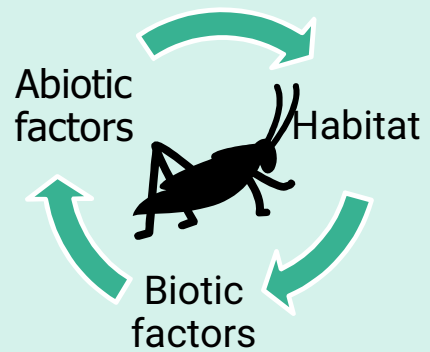
CONTINGENCY PLANNING AND SCIENTIFIC EXPERTISE



CONTINGENCY PLANNING AND SCIENTIFIC EXPERTISE



Epidemiology



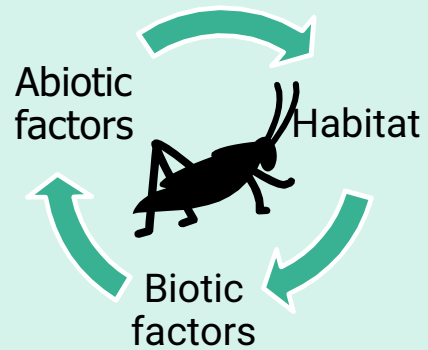
Pest risk assessment

Entry
Establishment
Spread
Impact



1

Epidemiology



Pest risk assessment

Entry
Establishment
Spread
Impact



2

Management options

Effectiveness
Practicality
Agronomy



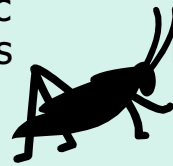
1

Epidemiology

Abiotic factors

Habitat

Biotic factors



Pest risk assessment

Entry
Establishment
Spread
Impact



2

Management options

Effectiveness
Practicality
Agronomy



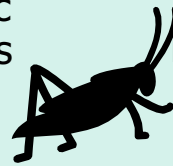
1

Epidemiology

Abiotic factors

Habitat

Biotic factors



3

Surveillance

General surveillance
& Horizon scanning

Specific surveys
Detection & diagnostics



What
Where
When How
How much



Pest risk assessment

Entry
Establishment
Spread
Impact



2

Management options

Effectiveness
Practicality
Agronomy



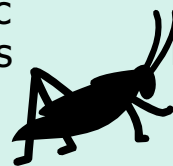
1

Epidemiology

Abiotic factors

Habitat

Biotic factors



3

Surveillance

General surveillance
& Horizon scanning



Specific surveys
Detection & diagnostics

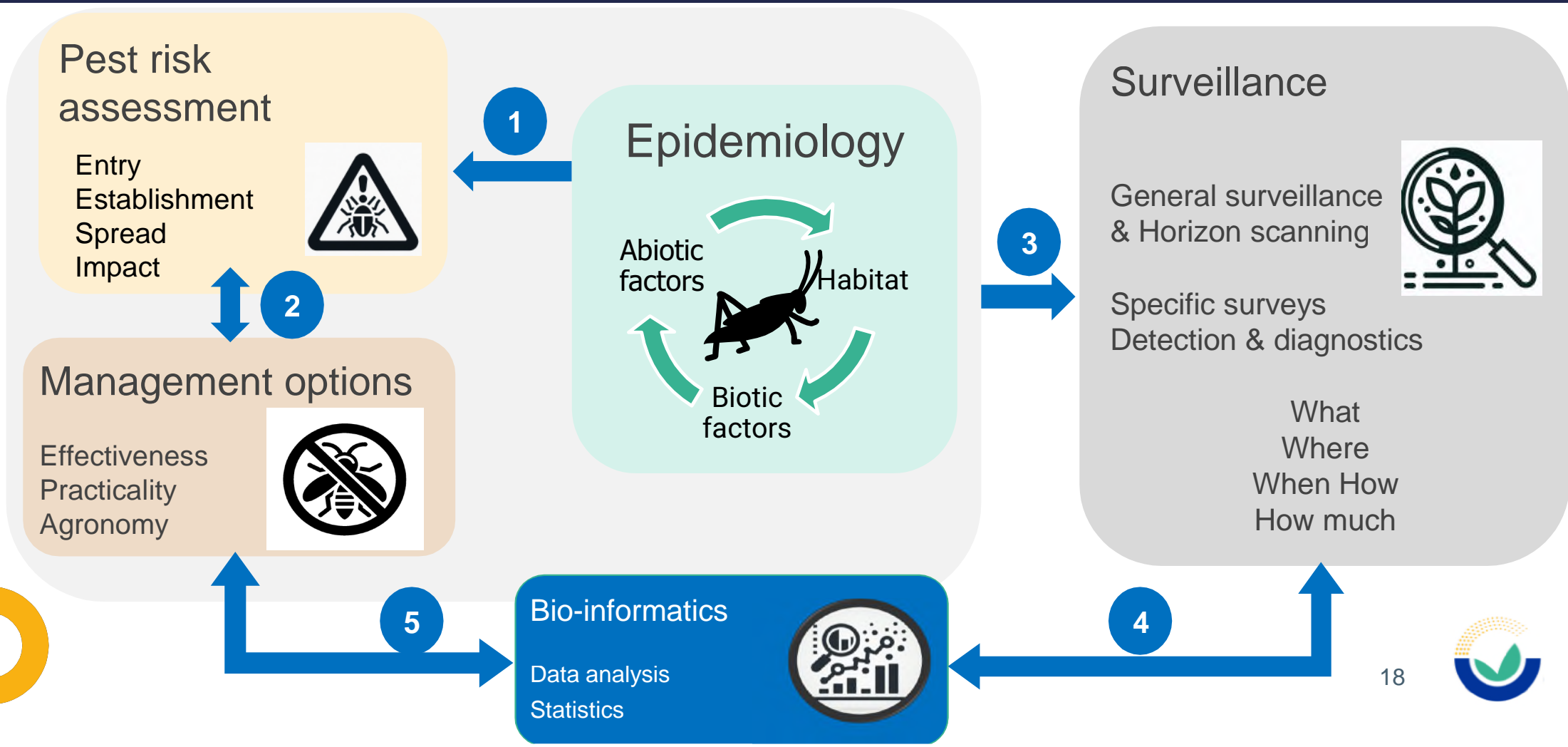
What
Where
When How
How much

4

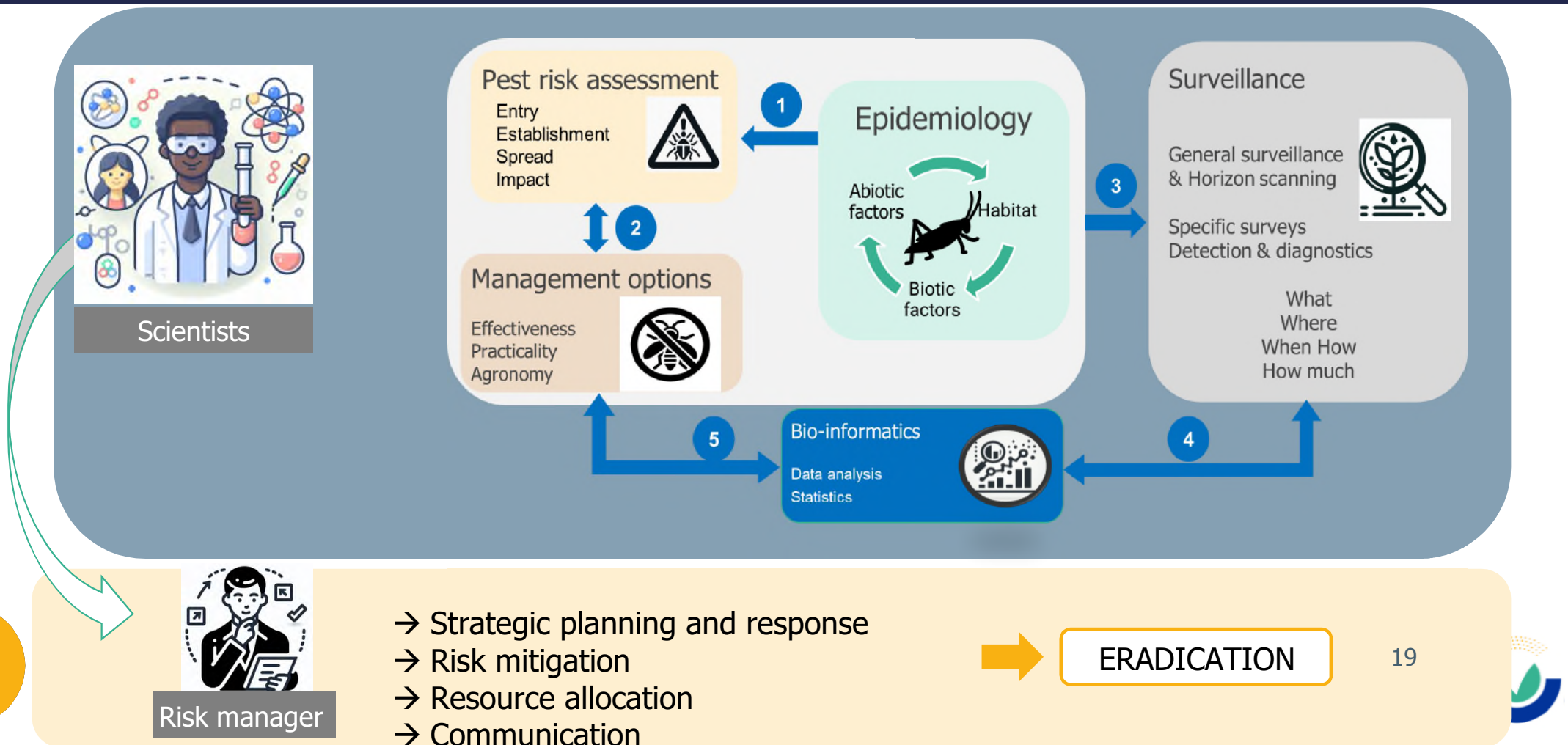
Bio-informatics

Data analysis
Statistics





CONCLUSION



STAY CONNECTED

SUBSCRIBE TO

efsa.europa.eu/en/news/newsletters
efsa.europa.eu/en/rss
[Careers.efsa.europa.eu](https://careers.efsa.europa.eu) – job alerts



FOLLOW US ON BLUESKY

[@efsa.bsky.social](https://bsky.app/profile/efsa.social)
[@efsa-animals.bsky.social](https://bsky.app/profile/efsa-animals.bsky.social) [@efsa-plants.bsky.social](https://bsky.app/profile/efsa-plants.bsky.social)



FOLLOW US ON INSTAGRAM

[@onehealth_eu](https://www.instagram.com/onehealth_eu)



LISTEN TO OUR PODCAST

Science on the Menu – Spotify, Apple Podcast and YouTube



FOLLOW US ON LINKEDIN

[Linkedin.com/company/efsa](https://www.linkedin.com/company/efsa)



CONTACT US

efsa.europa.eu/en/contact/askefsa

